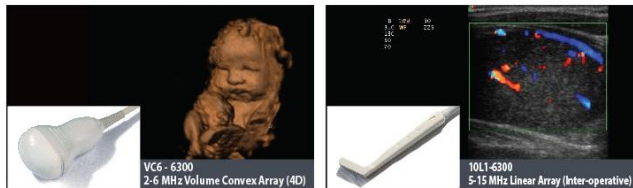
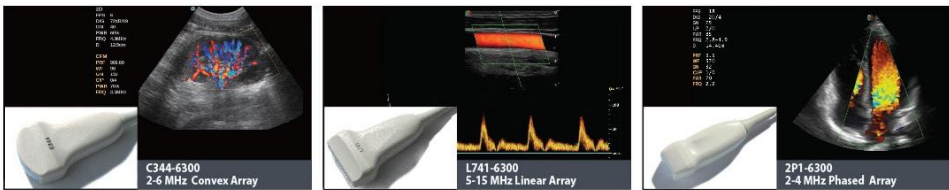


Technology	Digital Beam former with Multi-Beam Parallel Processing Technology
Display	15-inch High-Resolution Color LCD monitor
Probe Connectors	3 Active connectors
Application	Abdominal, Cardiology, Obstetrical & Gynaecological, Musculoskeletal, Vascular, Urological, Small Parts / Superficial and Paediatric
Scanning Methods	Electronic Convex Array, Electronic Linear Array, Electronic Phased Array, Electronic Volume Array
Imaging Modes	B-Mode, M-Mode, Color Flow Mode (CFM), Pulse Wave Doppler (PWD), Power Doppler Imaging (PDI), Tissue Harmonic Imaging (THI), Compound Imaging, High Pulse Repetition Frequency (HPRF), Trapezoidal Imaging, Triplex Mode (Optional - Continuous Wave Doppler(CWD)), Steer M Mode, Real Time 3D(4D) Imaging, Panoramic Imaging
Display Modes	B, M, D, B&M, B&D, 2B Mode, 4B Mode, Real Time Triplex (B, Flow, PW/CW and B, Flow), Dual Live Mode
System Dynamic Range	320dB Maximum
Maximum Frame Rate	800 - 1000 frames/sec (Probe/Application dependent)
Display Gray Scale	256 levels
Maximum Scanning Depth	24 cm (probe dependent)
Transducer Type	Convex Array, Micro Convex Array, Linear Array, Phased Array, Intra-operative, Endocavity & Volume (4D)
Transducer Elements	High Density probes with elements upto 256 channel
Data Storage	HDD (320 GB or more), USB drive, DVD drive, archived image can be viewed on PC
Network Communication	DICOM 3.0 ready, Dicom PRINT / SEND / WORKLIST / STORAGE / MPPS(standard)
Measurement & Calculation	General, Abdominal, Obstetric, Gynaecology, Small Parts, Urology, Cardiac & Vascular
Report Function	Obstetrical /Gynaecological, Cardiac, Vascular, Urology & Small Part
Power Requirement	220 Volts AC 50Hz
Environmental Requirements	Temperature: +10 to +40 degrees C, Relative Humidity: 30% to 75% (non condensing)



Designed to multi-task

Blue Star MUS 6300



Medical Electronics, Blue Star Limited.

Mumbai: 22-66664000 / 9820199383, Vadodara: 265-6614095 / 9979878100, Chennai: 44 - 42444000 / 9940054150, New Delhi: 11 - 41494000 / 9810632403, Bangalore: 7259488113, Kolkata: 33-22134000 / 9830042564 | Email: medenquiry@bluestarindia.com | Website: www.electronics.bluestarindia.com



Compact Unit with Multiple Functions

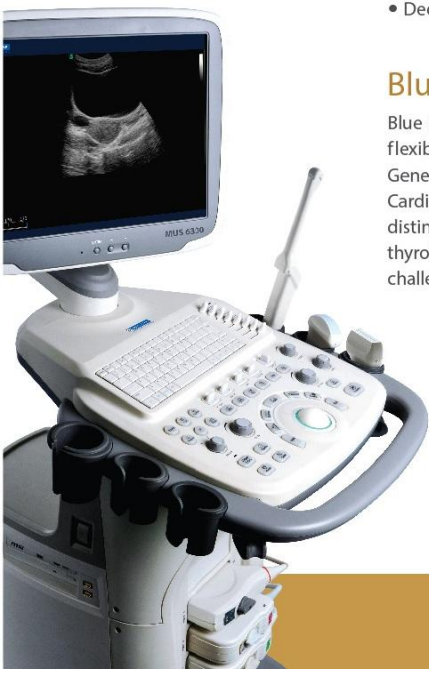
With over seven decades of experience in offering expert solutions, Blue Star's Medical Electronics Division offers high performance medical equipment in the fields of Medical Imaging (CT, MRI, Ultrasound), Electro Physiology & Critical Care (Patient Monitors and Syringe Pump), Bone Mineral Density (BMD) etc. Now it brings you Blue Star MUS 6300.

Core strengths of the Medical Electronics Division:

- Extensive training in customer support application
- Efficient customer support
- Sales and service engineers in 8 cities across India
- Dedicated team of engineers and management professionals

Blue Star MUS 6300

Blue Star's latest Colour Doppler System MUS 6300 is a perfect combination of flexibility and versatility. It is suited for multiple clinical applications in the areas of General Imaging, Obstetric/Gynaecology, Urology, Paediatrics, Small Parts and Cardiology. Its advanced detail resolution and colour flow enables you to easily distinguish between cystic and solid lesions, especially in small parts like the thyroid, breast and ovary. Its advanced functions help in identifying even the most challenging pathologies and amplifies the ultra-sound imaging experience.



Diagnostic applications:

- Abdominal, Obstetric, Gynaecology, Musculoskeletal Urology, Small Parts/ Superficial, Cardiac/ Vascular and Paediatric

Advanced Colour Doppler System:

- 15-inch Flat Panel Display with swivel arm
- 3 active probe connectors
- Digital Beam Former with Multi-Beam processing
- Colour flow mode
- Pulsed wave
- Compound Imaging
- Tissue Harmonic Imaging
- Trapezoidal Imaging
- High Density (up to 256 elements) Multi-Frequency Wide Band Transducers

New software platform:

- Convenient patient file management system
- Customisable function keys, icons, measurement, report, comments and layout
- Custom-made keyboard and panel layout

- Support Linear, Convex, Micro-convex, Phased, Array, Endovaginal, Endorectal, Intra-operative and Volume (4D) Transducers

- High Frame Rate (800 - 1000 frms/sec)
- Wide range of scanning frequency (2 to 15 MHz)
- Continuous Wave (CW) Doppler (Optional)
- Steer M mode (Optional)
- Power Doppler
- Panoramic Imaging (Option)
- Real Time 3D (4D) Imaging (Optional)
- Special function probes (For example: Intra-operative)

- DICOM 3.0 system: Saves, stores, prints, maintains work-lists, MPPS and enables file transmission
- Complete data solution: 320GB hard drive, USB ports, VGA, S-video, DVD RW, LAN port and thermal printer support

